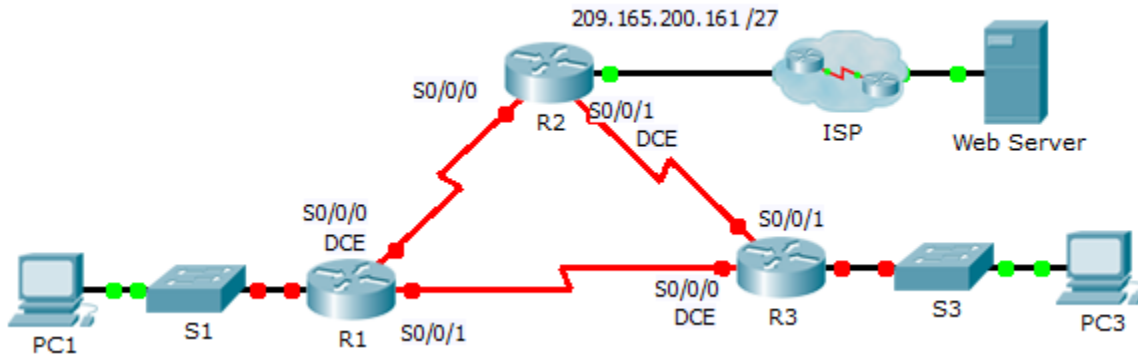


Packet Tracer – Troubleshooting PPP with Authentication

Topology



Addressing Table

Device	Interface	IP Address	Subnet Mask	Default Gateway
R1	G0/1	10.0.0.1	255.255.255.128	N/A
	S0/0/0	172.16.0.1	255.255.255.252	N/A
	S0/0/1	172.16.0.9	255.255.255.252	N/A
R2	G0/1	209.165.200.161	255.255.255.224	N/A
	S0/0/0	172.16.0.2	255.255.255.252	N/A
	S0/0/1	172.16.0.5	255.255.255.252	N/A
R3	G0/1	10.0.0.129	255.255.255.128	N/A
	S0/0/0	172.16.0.10	255.255.255.252	N/A
	S0/0/1	172.16.0.6	255.255.255.252	N/A
ISP	G0/1	209.165.200.162	255.255.255.224	N/A
PC1	NIC	10.0.0.10	255.255.255.128	10.0.0.1
PC3	NIC	10.0.0.139	255.255.255.128	10.0.0.129
Web Server	NIC	209.165.200.2	255.255.255.252	209.165.200.1

Objectives

Part 1: Diagnose and Repair the Physical Layer

Part 2: Diagnose and Repair the Data Link Layer

Part 3: Diagnose and Repair the Network Layer

Scenario

The routers at your company were configured by an inexperienced network engineer. Several errors in the configuration have resulted in connectivity issues. Your boss has asked you to troubleshoot and correct the

configuration errors and document your work. Using your knowledge of PPP and standard testing methods, find and correct the errors. Make sure that all of the serial links use PPP CHAP authentication, and that all of the networks are reachable. The passwords are **cisco** and **class**.

Part 1: Diagnose and Repair the Physical Layer

Step 1: Diagnose and repair the cabling.

- a. Examine the **Addressing Table** to determine the location of the all connections.
- b. Verify cables are connected as specified.
- c. Diagnose and repair any inactive interfaces.

Part 2: Diagnose and Repair the Data Link Layer

Step 1: Examine and set clock rates on the DCE equipment.

Examine the configuration of each router to verify that a clock rate has been set on appropriate interfaces. Set the clock rate of any serial interfaces that requires it.

Step 2: Examine the encapsulation on the DCE equipment.

All of the serial interfaces should be using PPP as the encapsulation type. Change the encapsulation type to PPP for any interface that is set otherwise.

Step 3: Examine and set CHAP usernames and passwords.

Examine each link to verify that routers are logging into each other correctly. All CHAP passwords are set to **cisco**. Use the **debug ppp authentication** command if needed. Correct or set any usernames and passwords that need it.

Part 3: Diagnose and Repair the Network Layer

Step 1: Verify the IP addressing.

Check IP addresses against the Addressing Table and ensure that they are in the correct subnet with their connecting interface. Correct any IP addresses that overlap, are on the wrong interface, have the wrong subnet address, or are set to the host or broadcast address.

Step 2: Verify full connectivity by tracing a path from PC1 and PC3 to the web server.